

Community Construction Update



CAMBRIDGE HOTEL – SURRY HILLS

AUGUST 2022

Activities	Impact
Construction Works Zone	Active Managed footpath & vehicle movements to ensure public safety around site activities.
Hoardings	Active Pedestrian access along Riley Street remains in-tact Pedestrian access within Lower Campbell Street is limited to footpath opposite the work site Traffic control managed footpath & vehicle movements to ensure public safety around site activities
Scaffold	Dismantle of the scaffold has been completed in bulk, with minor scaffold bays remaining for specific works
Structure Construction	Complete
Façade Construction	Street level works are ongoing with all other areas complete
Internal Fitout	Ongoing
External & Street works	Due to commence 22 August 2022 in accordance with the phasing plans below
Crane	Due for dismantle on 27 th August 2022

Hutchinson Builders will use the month of June to commence the street works and continue internal fitout works. It is anticipated that this phase of works will continue through this month and into the coming months. As a result, you will see a progressive removal of the hoarding.

As always Hutchies aims to ensure our works have minimal disruption to the surrounding neighbourhood and we will monitor dust and vibration during demolition activities.

Community Construction Update

We thank you for your support of the project and invite you to contact us on the below details if you have any questions or would like to share feedback throughout the process.

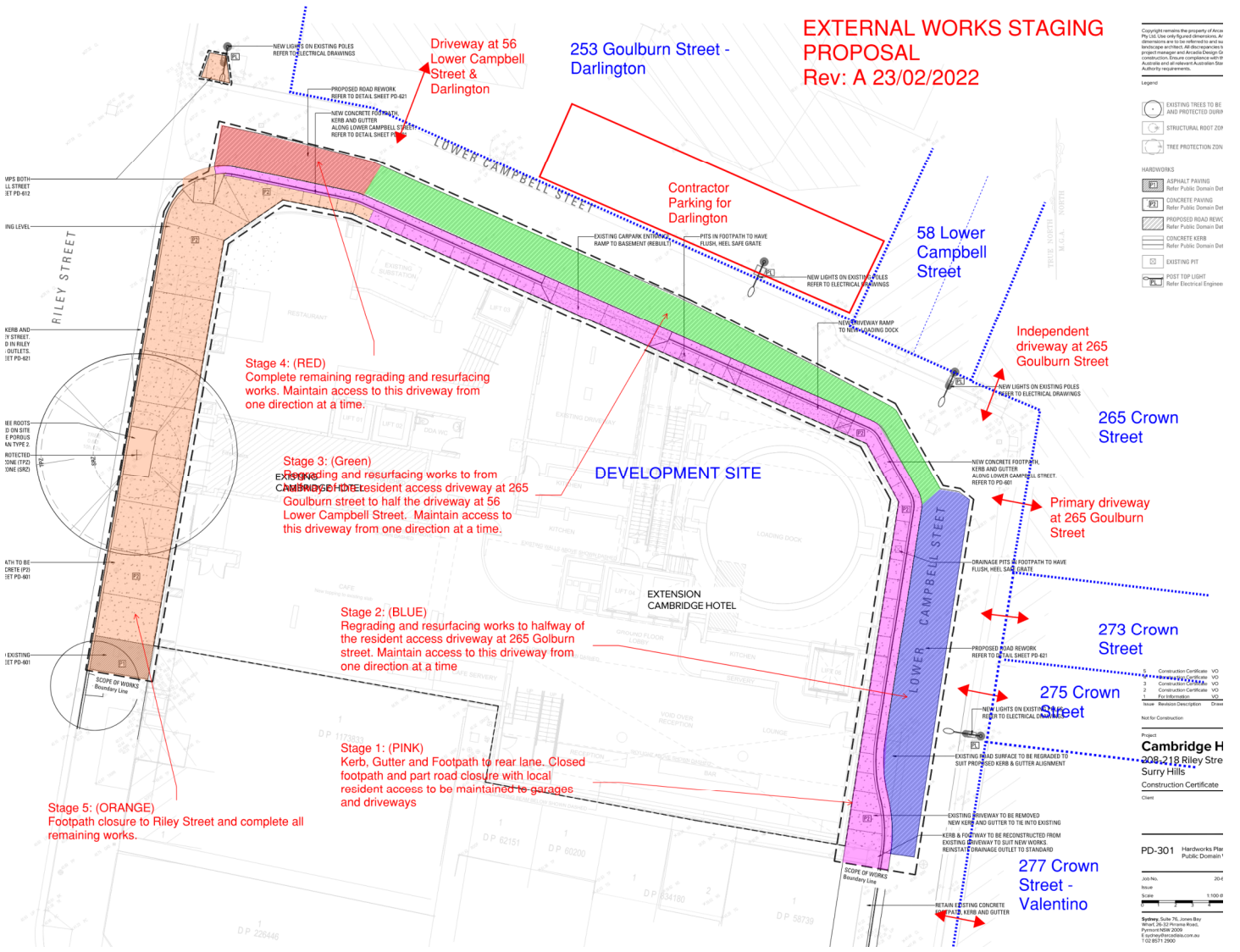
Get in touch

Nathan Kairouz
Project Manager
P / 02 8344 2400
E / ADGEHotel@hutchinsonbuilders.com.au

Find out more about this project online at hutchies.com.au

Community Construction Update

Street Works Staging Plan



EXTERNAL WORKS STAGING PROPOSAL
Rev: A 23/02/2022

Stage 4: (RED)
Complete remaining regrading and resurfacing works. Maintain access to this driveway from one direction at a time.

Stage 3: (Green)
Regrading and resurfacing works to from Cambridge Hotel resident access driveway at 265 Goulburn street to half the driveway at 56 Lower Campbell Street. Maintain access to this driveway from one direction at a time.

Stage 2: (BLUE)
Regrading and resurfacing works to half way of the resident access driveway at 265 Goulburn street. Maintain access to this driveway from one direction at a time

Stage 1: (PINK)
Kerb, Gutter and Footpath to rear lane. Closed footpath and part road closure with local resident access to be maintained to garages and driveways

Stage 5: (ORANGE)
Footpath closure to Riley Street and complete all remaining works.

Copyright remains the property of Arca Pty Ltd. Use only for the purposes of the project manager and Arca Design Co. construction. Ensure compliance with applicable and all relevant Australian State Authority requirements.

Legend

- EXISTING TREES TO BE MAINTAINED AND PROTECTED (SMB)
- STRUCTURAL ROOT ZONE
- TREE PROTECTION ZONE

HANDWORKS

- ASPHALT PAVING Refer Public Domain Det
- CONCRETE PAVING Refer Public Domain Det
- PROPOSED ROAD REVC Refer Public Domain Det
- CONCRETE KERB Refer Public Domain Det
- EXISTING FIT
- POST TOP LIGHT Refer Electrical Engineer

Not for Construction

Cambridge H
208-218 Riley Stre
Surry Hills
Construction Certificate
Client

PD-301 Handworks Plan
Public Domain

Job No. 2004
Scale 1:1000

Author: Brad Mc James
Rev: 06-22 Arca Design Co.
Project: 1001-2003
E: graham@arcadesign.com.au
T: 02 8871 1900